

GP Rating Model Question paper

Note:

Please note that you will find sample question/previous years questions below. Each section will have a sample of 30 questions so as to give you an idea. Correct answers are highlighted or specified below the question for your reference.

Section A – Technical

GP-A-01

Direction

Identify the equipments placed on navigation bridge indicated by the arrow

Question



Answer Options

1. Steering control with Gyro-Compass Indicator
2. Steering control with Magnetic-Compass Indicator
3. Telegraph with Gyro-Compass Indicator
4. Telegraph with Magnetic-compass Indicator

Correct Option : (1)

Solution : Self-Explanatory

GP-A-02

Direction

Identify the equipment used on navigation bridge of the ship

Question



Answer Options

1. Radar
2. Echo-Sounder
3. Electronic Chart Display and Identification System (ECDIS)
4. Doppler Log

Correct Option : (2)

Solution : Self explanatory

GP-A-03

Direction

--

Question

Which Equipment is used to measure the ship speed at sea?

Answer Options

1. Radar
2. Magnetic Compass
3. Telegraph
4. Doppler Log

Correct Option : (4)

Solution : Self-Explanatory

SAMPLE

GP-A-04

Direction

Identify the markings in the picture and choose correct option below

Question



Answer Options

1. To identify height of a person with respect to ship
2. Distance below the bridge of the ship
3. Draught marks on starboard side of the ship
4. Draught marks on port side of the ship

Correct Option : (4)

Solution : The visible portion is forward part of the ship and port side draught marks are visible.

GP-A-05

Direction

Identify the equipment in the below picture

Question



Answer Options

1. Turnbuckle
2. Shackle
3. Bottle screw
4. Bulldog grip

Correct Option : (2)

Solution : Self Explanatory

GP-A-06

Direction

Identify the red colour object(s) seen the picture and choose the best option

Question



Answer Options

1. Buoy with a SI Light
2. MOB Marker arrangement
3. Security Guard Gun rigging arrangement
4. Panama Lead for passing ropes

Correct Option : (2)

Solution :

SAMPLE

GP-A-07

Direction

Identify the act of the person onboard a ship in the picture below :

Question



Answer Options

1. Checking Sounding
2. Checking Temperature
3. Fishing
4. Doing repair work

Correct Option : (1)

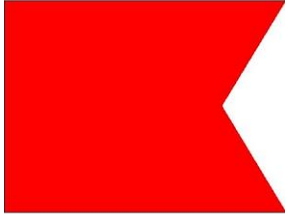
Solution : Self Explanatory

GP-A-08

Direction

Identify the flag used onboard the ship.

Question



Answer Options

1. 'A'
2. 'B'
3. 'Y'
4. 'Z'

Correct Option : (2)

Solution :

SAMPLE

GP-A-09

Direction

Fill in the blanks:

Question

The name of the instrument onboard a ship used to measure the atmospheric pressure is

Answer Options

1. Anemometer
2. GPS
3. Barometer
4. GMDSS

Correct Option : (3)

Solution :

SAMPLE

GP-A-10

Direction

Identify the tool in the picture

Question



Answer Options

1. Spanner
2. Pipe Wrench
3. Clipper
4. Mallet

Correct Option : (2)

Solution :

GP-A-11

Direction:

Fill in the blanks by choosing the best option.

Question:

_____ is the electronic equipment used to identify the name of the surrounding nearby ships at sea.

Answer Options

1. Geographical Position System (GPS)
2. Electronic Charts Display and information system (ECDIS)
3. Automatic Identification System (AIS)
4. Search and Rescue Radar Transponder (SART)

Correct Option : (3)

Solution : Self explanatory



GP-A-12

Direction:

Choose the odd one out.

Question:

Which of the following is not the synthetic material used for making ropes for ship use.

Answer Options

1. Nylon
2. Polyester
3. Hemp
4. Kevlar

Correct Option : (3)

Solution : Hemp is natural fiber rope. Other three are synthetic materials.

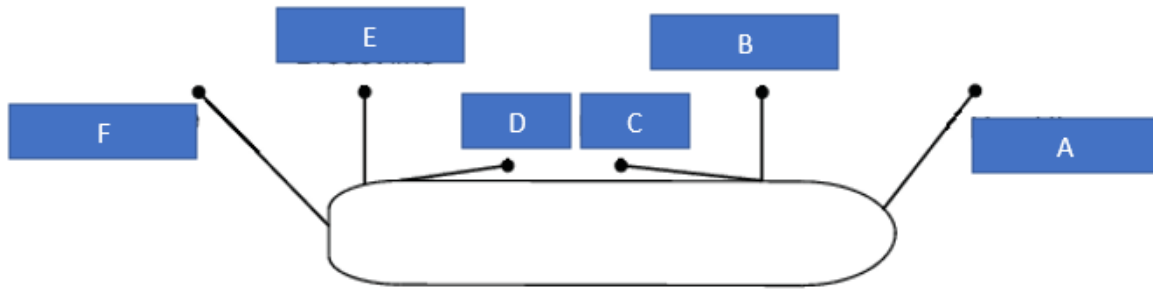
SAMPLE

GP-A-13

Direction

Identify the breast lines on the representative figure of moored ship.

Question



Answer Options

1. A & F
2. B & E
3. C & D
4. B & C

Correct Option : (2)

Solution : Self Explanatory

GP-A-14

Direction

Identify the hand signal given to crane operator by signal man with respect to crane operations on ships

Question



Arm extended, fingers closed, thumb pointing down

Answer Options

1. Slack the runner wire
2. Come down from the crane cabin
3. Lower the crane boom
4. You are not following the correct signals

Correct Option : (3)

Solution : Self explanatory



GP-A-15

Direction:

Fill in the blanks by choosing best option:

Question:

Three shackles of anchor chain is equal to approximately _____ meters in length

Answer Options

1. 55
2. 152
3. 82
4. 110

Correct Option : (3)

Solution : 1 Shackle of Anchor length is = 15 fathom = 27.42 m (approx.) = 90 feet. So three shackles is equal to $3 \times 27.42 = 82$ meters

GP-A-16

Direction

Identify the meaning of IMDG label as shown in the below picture:

Question



Answer Options

1. Flammable Liquid
2. Flammable Solid
3. Non-Flammable Gases
4. Radioactive Substance

Correct Option : (1)

Solution : IMDG Dangerous Goods Class 3 Label – Flammable liquids

GP-A-17

Direction

Identify the item the person is wearing in the picture

Question



Answer Options

1. Winter thermal Clothing
2. Immersion suit
3. Boiler Suit for entering in Bunker Tank
4. Fireman suit

Correct Option : (2)

Solution : This is an Immersion suit with face cover

GP-A-18

Direction

The equipment shown in the picture below is _____

Question



Answer Options

1. Tank Ventilation pipeline
2. Long Range Binocular
3. Foam Monitor
4. Chemical storage pipeline

Correct Option : (3)

Solution: This is a Foam Monitor is a part of fixed fire fighting system on decks of tanker ships.



GP-A-19

Direction:

Identify your action for the below scenario:

Question:

You are on ship sleeping at night in your cabin and you start hearing continuous ringing of the bell. You shall _____

Answer Options

- 1. Ignore the bell and sleep as alarms come frequently on ship**
- 2. Knock into your neighbor cabin and ask what happened**
- 3. Quickly wake up, get ready and go to your muster station**
- 4. Quickly wake up and get yourself seated in lifeboat immediately**

Correct Option : (3)

Solution : continuous ringing of ships bell is the fire alarm on ship. Wake up, get ready and immediately go to your muster station and wait for orders from superior for the briefing about the fire and your actions.

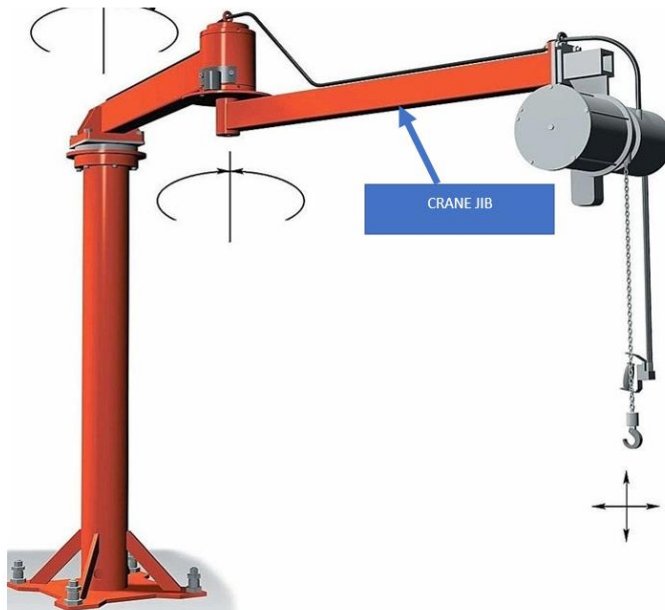
GP-A-20

Direction

Given Below is the crane in the picture. The left-write motion of the crane jib is called

_____.

Question



Answer Options

1. Skewing
2. Slewing
3. Circling
4. Luffing

Correct Option : (2)

Solution :

GP-A-21

Direction:

Choose your suitable action.

Question:

You are steering on bridge and wheel is on Port 20°. On hearing the helm Order from Pilot 'Steady', your action will be:

Answer Options

- 1. Keep the helm to Port 20° and let the vessel swing at steady pace.**
- 2. Give helm on starboard side sufficient to stop the swing as quickly as possible.**
- 3. Give helm on port side sufficient to stop the swing as quickly as possible.**
- 4. Acknowledge the pilot and take no action.**

Correct Option : (2)

Solution : Stop the swing as quickly as possible by reversing the helm (i.e. on starboard side in this case).

GP-A-22

Direction:

Choose the best option

Question:

Types of Steering modes on ship are :

Answer Options

1. Non-Follow Up, Hand Steering, Auto Pilot Steering, Emergency Steering
2. New-Fellow Up, Hand Steering, Auto Pilot Steering, Emergency Steering
3. Non-Follow Up, Manual Steering, Air Pilot Steering, Emergency Steering
4. None of the options

Correct Option : (1)

Solution : Non Follow Up (NFU); Manual or Hand Steering, Auto Pilot Steering, Emergency Steering



GP-A-23

Direction:

Choose the best option.

Question:

Hatch preparation for the cargo consists of :

Answer Options

- 1. Sweeping the Hatch clean of residue**
- 2. Washing and mopping the hatch**
- 3. Cleaning the Bilges**
- 4. All the options are correct.**

Correct Option : (4)

Solution : Self Explanatory

SAMPLE

GP-A-24

Direction:

Find the equipments used for lifting objects on ship from below list of equipments and choose the correct option below:

Question:

- A. Slings
- B. Snotters
- C. Crane
- D. Derricks
- E. Gantry
- F. Chain Block
- G. Container Shoe
- H. Bridge Fittings

Answer Options

- 1. A,B,C,D,E,F,G,H
- 2. A,B,C,D,E,F,G
- 3. A,B,C,D,E,F
- 4. A,B,C,D,E

Correct Option : (3)

Solution : All except container shoe and bridge fittings. These two are used for lashing and not for lifting.

GP-A-25

Direction:

Choose the best option

Question:

Anchor 'brought up' means _____

Answer Options

1. Anchor is holding the ground
2. Anchor is all the way up on ship and ship is free to sail out.
3. Anchor is placed on deck for repairs
4. None of the options

Correct Option : (1)

Solution : Anchor 'brought up' means that anchor is holding the ground and vessel shall swing in the circle depending on wind and waves pivoted around the anchor. Ship is not free to sail out.

GP-A-26

Direction

Identify the equipment and choose the most appropriate option

Question



Answer Options

1. Container shoe used for securing containers
2. Container shoe used for lifting containers
3. Bridge fitting used for securing containers
4. Bridge fitting used for lifting containers

Correct Option : (3)

Solution : Bridge Fittings used on top part of containers to secure them.



GP-A-27

Direction

Identify the knot in the given picture

Question



Answer Options

1. Carrick Bend
2. Clove hitch
3. Sheep Shank
4. Sheet Bend

Correct Option : (4)

Solution : This is a sheet bend

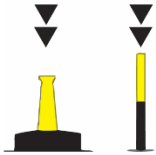
SAMPLE

GP-A-28

Direction

Identify the buoy

Question



Answer Options

1. Safe Water Buoy
2. Cardinal Buoy
3. Isolated Danger Buoy
4. None of these

Correct Option : (2)

Solution : This is a South Cardinal Buoy

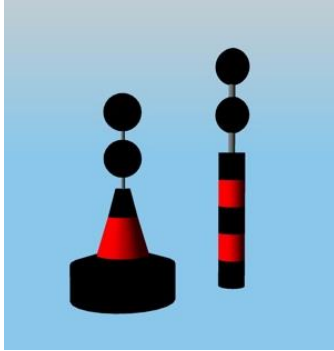
SAMPLE

GP-A-29

Direction

Identify the buoy

Question



Answer Options

1. Isolated Danger Buoy
2. Cardinal Buoy
3. Port Hand Buoy
4. Starboard Hand Buoy

Correct Option : (1)

Solution : This is an Isolated Danger buoy

GP-A-30

Direction:

Choose the most appropriate option

Question:

Christmas Tree lights are located on _____

Answer Options

- 1. Main Deck**
- 2. Poop Deck**
- 3. Forecastle Deck**
- 4. Monkey Deck**

Correct Option : (4)

Solution : Christmas tree is located at Monkey Deck.

SECTION -B

GP-B-01

Question:

1.If there is a fire in the engine room, which of the following helps to shut off air from entering the engine room and feed the fire?

Answer Options:

1. Water Mist System
1. Fire extinguishers
2. Ventilation dampers
3. CO2 system

Correct option: (3)

GP-B-02

Question:

2.Which of the following fixed firefighting systems is fitted on passenger vessels to extinguish a fire in passenger cabins and accommodation spaces?

Answer Options:

1. Fixed Foam System
2. Sprinkler system
3. Emergency fire pump
4. Hyper mist system

Correct Option:(2)

GP-B-03

Question:

3. What is the name of the tank where the fuel is filled up after purification for use in engines?

Answer options:

1. Settling tank
2. Service tank
3. Double Bottom Tank
4. Bunker tank

Correct Option:(2)

GP-B-04

Question:

4. Which of the following equipment produces steam for use on board ship's machinery?

Answer options:

1. Electric heater
2. Auxiliary condenser
3. Auxiliary boiler
4. Fresh Water generator

Correct Option:(3)

GP-B-05

Question:

5. Which of the following parts of a main engine is cooled by fresh water when the engine is running?

Answer options:

1. Air starting valve
2. Main bearing
3. Cylinder liner
4. Crosshead bearing

Correct Option:(3)

GP-B-06

Question:

6. What is the name of the equipment that is used in the engine room to discharge relatively cleaner water from oily water mix solution?

Answer options:

1. Purifier
2. Incinerator
3. Oily water separator
4. Sewage Treatment plant

Correct Option:(3)

GP-B-07

Question:

7. Purging means _____

Answer options:

1. Release of gases in atmosphere
2. Dumping of waste water at sea
3. Transferring Oil from one tank to another
4. None of these

GP-B-08

Question:

8. What of the following tanks will be mostly empty when your ship is fully loaded with cargo?

Answer options:

1. Bunker tanks
2. Ballast tanks
3. Sludge tanks
4. Fresh water tank

Correct Option:(2)

GP-B-09

Question:

9. Which of the following conditions in an auxiliary engine will automatically trip it (safety cut-out)?

Answer options:

1. Very low lubricating oil pressure
2. Low fuel temperature
3. High exhaust temperature
4. Low exhaust temperature

Correct Option:(1)

GP-B-10

Question:

10. What is the function and purpose of the sump in an engine?

Answer options:

1. It expands the oil in the engine.
2. It holds the excess oil in the system and acts as a reservoir for drained oil.
3. It cools crankcase of the engine.
4. It is used as cleaning tank in the engine oil system.

Correct Option:(2)

GP-B-11

Question:

11. What is the name of the mounting on a boiler that opens automatically to relieve excess steam pressure?

Answer options:

1. Blowdown valve

2. Steam stop valve
3. Safety valve
4. Gauge glass drain valve

Correct Option:(3)

GP-B-12

Question:

12. Which of the following equipment traps solid particles from a liquid flowing in a pipeline?

Answer options:

1. Filter
2. Heater
3. Sludge pump
4. Purifier

Correct Option:(1)

GP-B-13

Question:

13. Which of the following spaces in the engine room is an enclosed space?

Answer options:

1. Purifier room
2. Engine stores
3. Fresh water tank
4. Emergency escape

Correct Option:(3)

GP-B-14

Question:

14. Which of the following deals with ensuring living conditions of seafarers onboard?

Answer options:

1. SOLAS

2. MARPOL
3. ISM
4. MLC

Correct Option:(4)

GP-B-15

Question:

15. What is the name of the equipment that converts water into steam by using heat?

Answer options:

1. Condenser
2. Evaporator
3. Cooler
4. Heater

Correct Option:(2)

GP-B-16

Question:

16. When entering in an Enclosed Space _____

Answer options:

1. Check tank atmosphere and obtain Permit to Work
2. Check tank atmosphere only
3. Take a torch and enter inside taking somebody with you as a backup
4. None of these

Correct Option:(1)

GP-B-17

Question:

17. Sea Chest Valve in Engine room _____

Answer options:

1. is used for discharging waste water at sea through pipelines
2. is used to obtain water from sea through pipelines
3. is used to fill the engine room for cleaning when required
4. None of these

Correct Option:(2)

GP-B-18

Question:

18. Which of the following Conventions deals with Pollution from Ships?

Answer options:

1. SOLAS
2. MARPOL
3. STCW
4. MLC

Correct Option:(2)

GP-B-19

Question:

19. Insert one rational number between $\frac{1}{4}$ and $\frac{3}{5}$.

Answer options:

1. $\frac{1}{2}$
2. $\frac{11}{5}$
3. $\frac{3}{2}$
4. $\frac{4}{5}$

Correct Option:(1)

GP-B-20

Question:

20. A Fraction between $\frac{2}{5}$ and $\frac{4}{9}$ is:

Answer options:

1. $\frac{21}{50}$
2. $\frac{11}{2}$
3. $\frac{1}{3}$
4. $\frac{1}{2}$

Correct Option:(1)

GP-B-20

Question:

20. Find the value of: $(0.1 \times 0.1 \times 0.1 + 0.02 \times 0.02 \times 0.02) / (0.2 \times 0.2 \times 0.2 + 0.04 \times 0.04 \times 0.04)$

Answer options:

1. 0.125
2. 0.625
3. 0.25
4. 0.5

Correct Option:(1)

GP-B-21

Question:

21. The number exceeds its one-fifth by 20. The number is

Answer options:

1. 100
2. 25
3. 20
4. 5

Correct Option:(2)

GP-B-22

Question:

22. Sum of factors of 24 is

Answer options:

1. 50
2. 60
3. 40
4. 80

Correct Option:(2)

GP-B-22

Question:

22. The average of 7 consecutive numbers is 6.5. Average of smallest and greatest numbers is:

Answer options:

1. 24
2. 23
3. 22
4. 13

Correct Option:(4)

GP-B-23

Question:

23. A number is as much greater than 10 as is less than 16

Answer options:

1. 13
2. 14

3. 15

4. 16

Correct Option:(1)

GP-B-24

Question:

24. The enhanced salary of a man becomes Rs. 24000 after 20% increment. His previous salary was

Answer options:

1. RS.24000

2. RS.19000

3. RS.16000

4. RS.20000

Correct Option:(4)

GP-B-25

Question:

25. Find the Square root of: $\frac{((0.064-0.008) \times (0.16-0.04))}{((0.16+0.08+0.04) \times (0.4+0.2)^3)}$

Answer options:

1. $\frac{2}{3}$

2. $\frac{1}{3}$

3. 3

4. $\frac{3}{2}$

Correct Option:(2)

GP-B-26

Question:

26. The duplicate ratio of $\sqrt{2}:\sqrt{3}$ is

Answer options:

1. 2:3
2. 4:9
3. 3:5
4. 16:25

Correct Option:(1)

GP-B-27

Question:

27. If $x = 1/(\sqrt{2}+1)$, then $(x+1)$ is equal to

Answer options:

1. 2
2. $\sqrt{2}-1$
3. $\sqrt{2}$
4. $\sqrt{2}+1$

Correct Option:(3)

GP-B-28

Question:

28. If $x:y = 3:1$, then $(x^3 - y^3) : (x^3 + y^3)$ is,

Answer options:

1. 13:14
2. 14:13
3. 10:11
4. 11:10

Correct Option:(1)

GP-B-29

Question:

29. Three bells ring simultaneously at 11 a.m. They ring at regular intervals of 20 min. , 30 min., 40 min. respectively. The time when all the three bells ring together next is

Answer options:

1. 2 p.m
2. 1 p.m
3. 1:15 p.m
4. 1:30 p.m

Correct Option:(2)

GP-B-30

Question:

30. A father is 7 times his son's age. After 4 years the sum of their ages will be 56. Present age of son is

Answer options:

1. 5 years
2. 6 years
3. 8 years
4. 9 years

Correct Option:(2)